



76 Valley View Road, Morningside, Durban, 4001
PO Box 37069, Overport, Durban, 4067

Tel: +27 (0)31 3032835
Fax: +27 (0)86 692 2547

UKUHLONGOZWA KOKWANDISWA KOMGWAQO U-P254/1 NGAPHANSI KOMKHANDLU WASE KHAYA VULAMEHLO NO MZUMBE, NGAPHANSI KOMKHANDLU WESIFUNDA UGU. KWAZULU-NATAL

Isingeniso

I-Afzelia Environmental Consultants (Pty) Ltd inkampani eqashe abakwa Samani Consulting cc, ngaphansi komnyango wezokuthutha KwaZulu-Natal ukwenza uhlelo locwaningo kwezemvelo olubizwa nge basic assessment kanye nokufaka isicelo sokugunyazwa ukusetshenziswa kwamanzi. Kuhlangozwa ukuthuthukiswa komgwaqo obuyi gravele ube itiyela (Type 4 Black Top).

Inhloso yalombiko (i) ukwazisa umphakathi kanye nalabo abathintekayo kanye nabafisa ukuzibandakanya (I&APs) ngomsebenzi ohlongoziwe kanye nokuthola izimvo zabo. (ii) ukucobelelana ngolwazi mayelana nomsebenzi ohlongoziwe kanye nohlelo locwaningo lwezemvelo nabathintekile kanye (iii) ukunikeza ithuba kwabathintekile kanye nabafisa ukuzibandakanya lokuthi babhalise bese bebeka izimvo zabo.

Lesi saziyo sinikezelwa ngaphansi komthetho wezokuphathwa kwemvelo kazwelonke wango 1998 (National Environmental Management Act No. 107 of 1998), nanjengokuchibiyelwa kwawo, kanye nomthetho wokucwaninga ukunukubezeka kwemvelo, owashicilelwa kuSomqulu kaHulumeni kwisaziyo esinenombolo engu R. 543 ka 2010, kanye nokubandakanya izaziyo ezingu nombolo R. 544, kanye no 546 ka 2010, nangaphansi komthetho wezokusetshenziswa kwamanzi kazwelonke, 1998 (National Water Act, 1998 (Act No 36, of 1998)) zokwenza uhlelo locwaningo lwemithelela kwezemvelo olubizwa nge-Basic Assessment kanye nesicelo sokugunyaza ukusetshenziswa kwamanzi.

Indawo

Ukuhlangozwa kokukhuliswa komgwaqo ongama 28km ubude ongaphansi kwemikhandlu yase khaya i Vulamehlo kanye no Mzumbe, ngaphansi komkhandlu wesifunda Ugu, eNingizimu neKwaZulu-Natal. Bheka **isandiso A (Appendix A)** esiveza isithombe sendawo. Indlela eya endaweni yeprojekthi umgwaqo u P 22-1 osekuqaleni komgwaqo u P254-1 ngaphansi komkhandlu wase khaya i Vulamehlo noma umgwaqo u P 75-2 osekupheleni komgwaqo uP254-1 ngaphansi komkhandlu asekhaya uMzumbe.

Inkomba yendlela

Uma usuka eThekwini, KwaZulu-Natal, hamba ngeningizimu yomgwaqo u N2. Hluka kwi exit 104 off ramp osuka ku N2, ungene kumgwaqo u R612 bese uqhebeke njalo ubheke eMzinto. Uma usuhambe amabanga anga 36.1 km ku-N2, jikela kwesokunxele ungene kumgwaqo u P254. Indawo yeprojekthi ingamabanga ayi 28km ubude kuwo lomgwaqo.

Le projekthi isendaweni yasemakhaya enemizini eqhelelene. Umgwaqo okhona unganga 28km ubude, unqamula amajika kanye nezintaba. Lomgwaqo uyi graveli futhi usesimeni esibi kanti futhi uthinteka kakhulu ngenxa yezimo sezulu, ikakhulukazi imvula. Umgwaqo u-P254-1 uhlanganisa umgwaqo u-P22-1 kanye no P75-2. Umgwaqo okhona usiza umphakathi ukuya e Mgayi Provincial Clinic, Ekubusisweni kanye Amahlaya Primary School, kanye nase Gobume High School. Ama tekisi kanye nezimoto ezincane ziwusebenzisa zonke izinsuku lomgwaqo.

Umsebenzi osemqoka

Loluhlelo lwentuthuko lubandakanya ukulungiswa kongwaqo u-P254/1 oyi-graveli ube itiyela. Umgwaqo omusha uzoba u 8.5 m ubukhulu, ube u 28 km ubude. Lentuthuko izoqala kumkhandlu wasekhaya i Vulamehlo ize iphele kumkhandlu wasekhaya Umzumbe esiphambanweni ku P75. Bheka **isandiso A(Appendix A)** ngesithombe esikhombisa indawo. Umgwaqo u P254 uqhamula imifula emibili emikhulu, Kwa Magwaza nakwa Fafa. Lomgwaqo uzonqamula izindawo eziwu 20 ezingcina amanzi. Okwamanje kunezindlela ezintathu kanye namapayipi okuthutha amanzi emvula.

Kuhlongozwa ukuthi kwenziwe okulandelayo:

- Ukulandwa nokulungiselelwa kwamatshe azokendlalwa emgwaqeni
- Ukulungiswa nokwakhiwa kwezindawo ezindonsa amanzi lapho okunesidingo khona
- Ukulungisela indawo yokumisa ama taxi
- Nokwakhiwa kwetiyela

Amatshe azolandwa kumgodi wenkwali okhona, osendaweni eyibanga eliyi 8km ukusuka endaweni yesakhiwo.

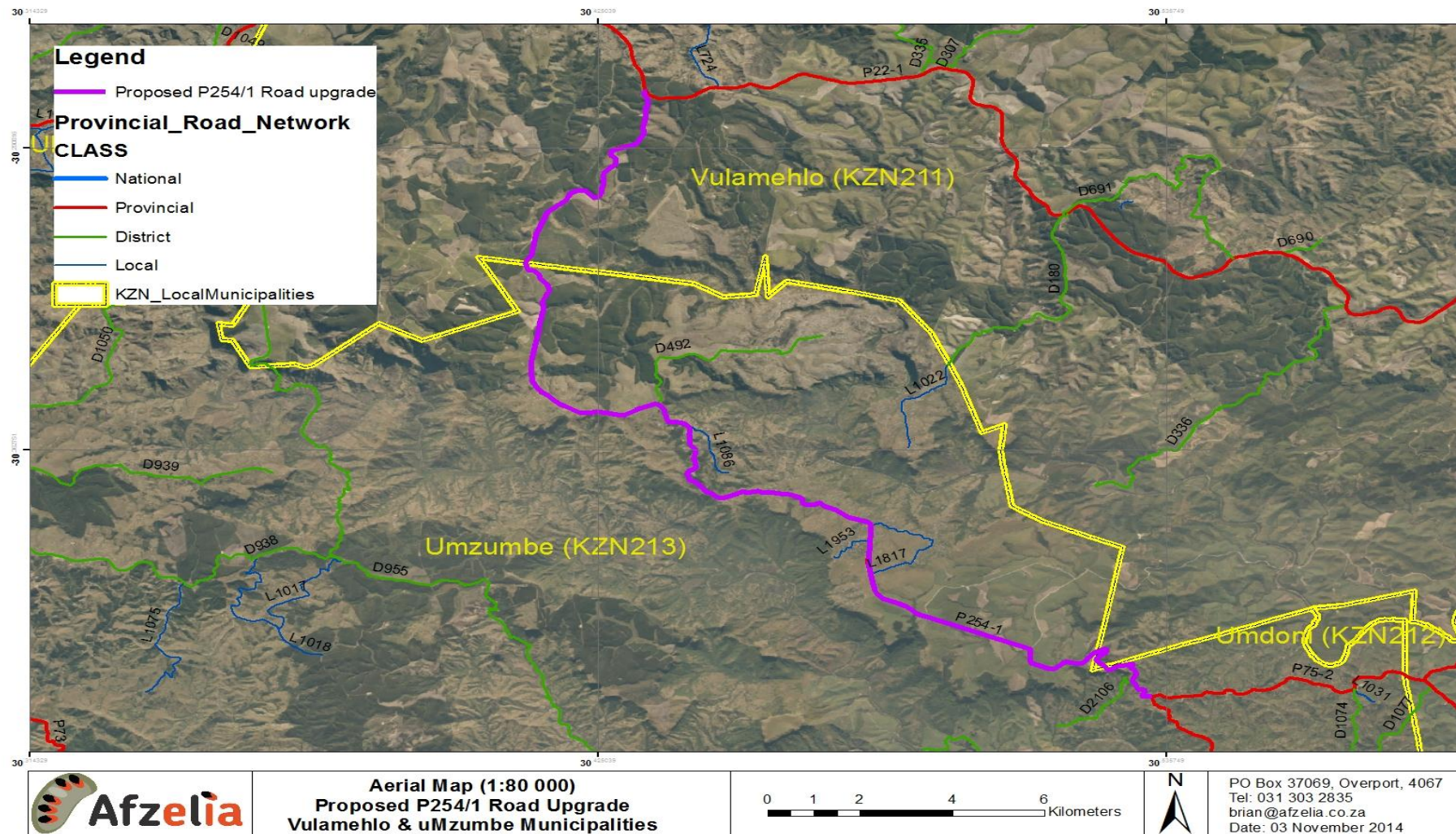
Ukubhalisa njengozibandakanyayo noma othintekayo:

Umakukhona othintekayo noma ofuna ukuzibandakanya kuloluhlelo angabhalisa igama lakhe kwabakwa Afzelia. Uma ufuna ukuthola ulwazi kabanzi mayelana neprojekthi noma ofuna ukubhaliswa njengomuntu ozibandakanyayo noma inhlangothi ethintekayo, uyacelwa ukuthi ugcwalise ifomu elitholakala kuAppendix /isandiso B uzihambisele lona noma ulithumele nge-imeyili, ifaksi noma iposi kwabakwa-Afzelia zingakapheli izinsuku eziwu 30. Ungakwazi nokushaya ucingo kubaxhumanisi uma ufuna ukuthola ulwazi olubanzi.

Imininingwane yabacwaningi bezemvelo:

Abaxhumanisi:	Mr Solomon Fataki
Ikheli lehhovisi:	76 Valley View Road, Morningside, Durban, 4001
Imininingwane:	Afzelia Environmental Consultants, (Pty) Ltd, PO Box 37069 Overport, Durban, 4067
Ucingo:	031 303 2835/ 082 086 5133
ifaksi:	086 692 2547
I-imeyili:	solomon@afzelia.co.za

Isandiso A (Appendix A): Isithombe sendawo



ISANDISO/ APPENDIX B: IFOMU LOKUBHALISA

lowo othintekayo nofisa ukuzibandakanya (I&AP),



76 Valley View Road, Morningside, Durban, 4001
PO Box 37069, Overport, Durban, 4067

Tel: +27 (0)31 3032835
Fax: +27 (0)86 692 2547

**UKUHLONGOZWA KOKWANDISWA KOMGWAQO U-P254/1
NGAPHANSI KOMKHANDLU WASE KHAYA VULAMEHLO NO
MZUMBE, NGAPHANSI KOMKHANDLU WESIFUNDA UGU.
KWAZULU-NATAL**

Ibizo:	Igama:	Isibongo:	Amaletha aqala amagama:
Inhlangano:		Umsebenzi:	
Ikheli leposi:			
Iposi/postal code:			
Ucingo:		Umakhalekhukhwini	
Ifaksi:		I-imeyili:	

Mina, mnikazi, omele isakhiwo / inhlangano owaziwango:

Ngiyaqinisekisa ukuthi ibalazwe lomsebenzi ohlongozi wengilinike ngaziswa ngalo. Imibono engiyivezayo lapha kumele ibandakanywe ohlelweni locwaningo.

Sicela unikezele ngolunye ulwazi mayelana (oqondene) nomsebenzi ohlongoziwe

Sicela ufake labantu abalandelayo kulolu hla lwabathintekile nabafisa ukubandakanyela ohlelweni:

Igama:	Inhlangano:
Ucingo:	
Ikheli:	
Igama:	Inhlangano:
Ucingo:	
Ikheli:	

Wasayina e- _____ ngo _____ mhlaka _____ 2013

Sayina _____

SICELA UTHUMELE IFOMU LOKUBHALISA KANYE NEMIBONO YAKO KULEMININGWANE:

Umcwaningiwemvelo:	Afzelia Environmental Consultants cc
Umxhumanisi:	Mr Solomon Fataki
Ikheli:	P O Box 37069, Overport, Durban, 4067
Iposi:	4067
Ucingo:	031 303 2835/ 082 086 5133
Ifaksi:	086 692 2547
I-Email:	solomon@afzelia.co.za
I-Website:	www.afzelia.co.za

SIYABONGA UKUBANDAKANYELA KWAKHO